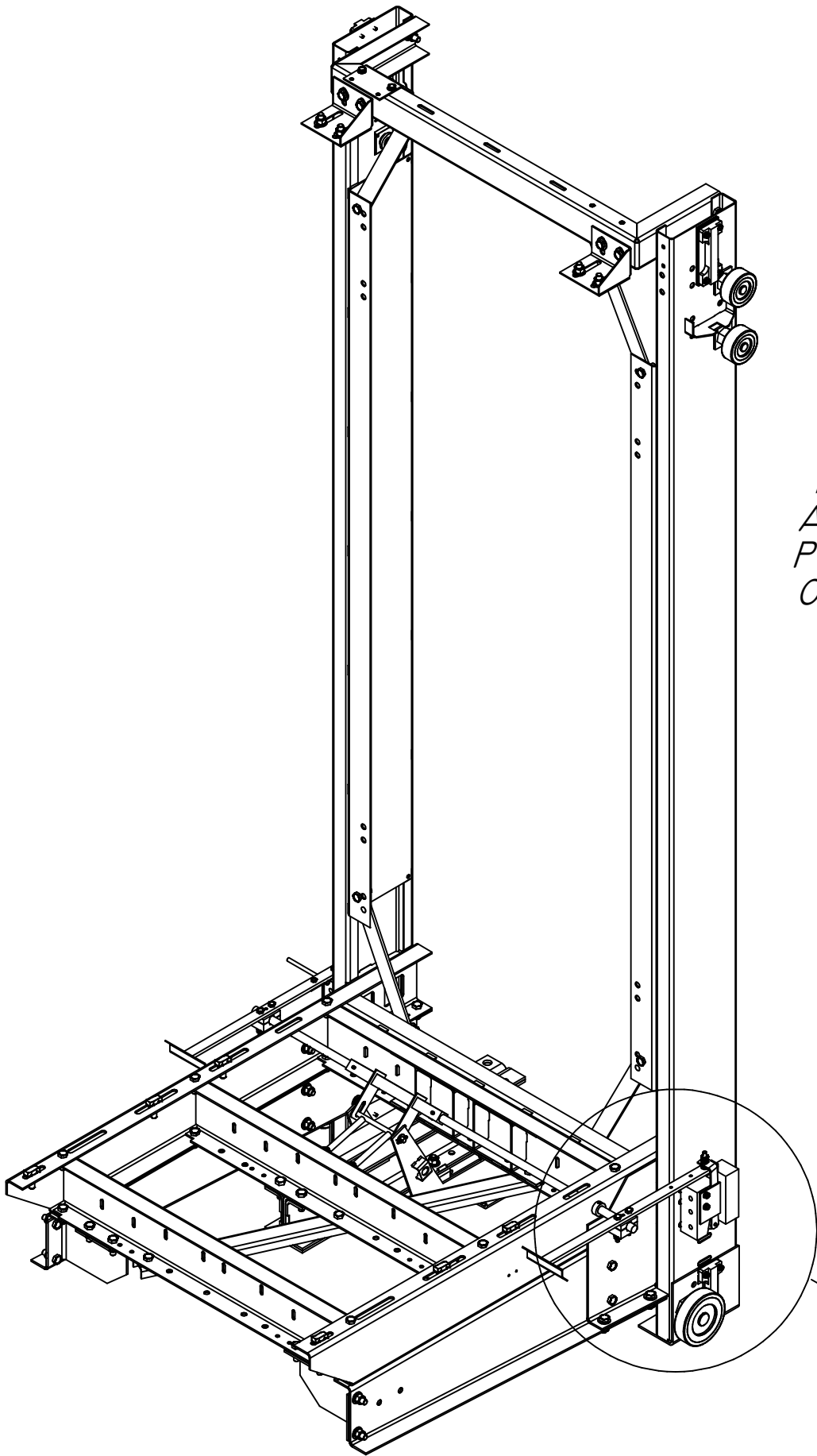


Hydraulic Drive Safety Components

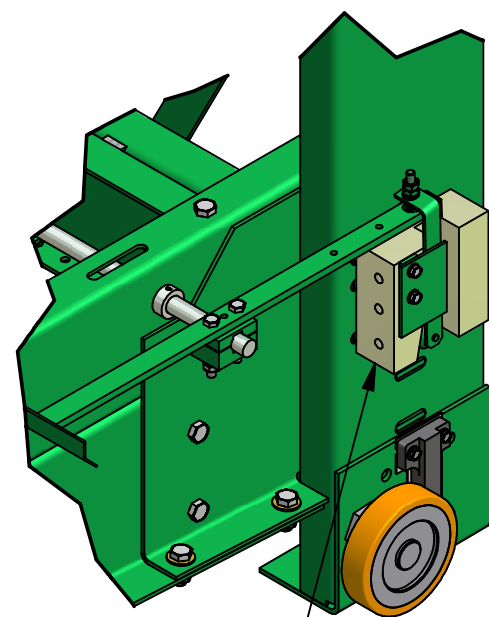
No	Component	Component Type	Supplier	Type Examination Certificate No	Test Office Location	Required?
1	Safety Gear	Instantaneous	Stannah	BSI-LI-009	BSI Testing (Hemel Hempstead, UK)	
2	Safety Gear	Progressive	IGV	I 0019	IMQ (Milan, Italy)	
3	Landing Door Locking Device	IGV : 2-Panel Doors	IGV	I 0157	IMQ (Milan, Italy)	
4	Anti-fall Device	Rupture Valve Type: VC3006/B	GMV	I 0184 to I 0187	IMQ (Milan, Italy)	
5	Energy-Accumulating Buffer	Polyurethane Buffer	P&S	08/208/AP 003/E5	TÜV	

POSITION AND DETAIL VIEW OF INSTANTANEOUS SAFETY GEAR BLOCK



A SAFETY GEAR IS A MECHANICAL DEVICE FOR STOPPING THE LIFT CAR AND MAINTAINING IT IN A STATIONARY POSITION ON THE GUIDES, IN THE CASE OF OVERSPEEDING IN THE DOWNWARDS DIRECTION, OR FAILURE OF THE SUSPENSION ROPES.

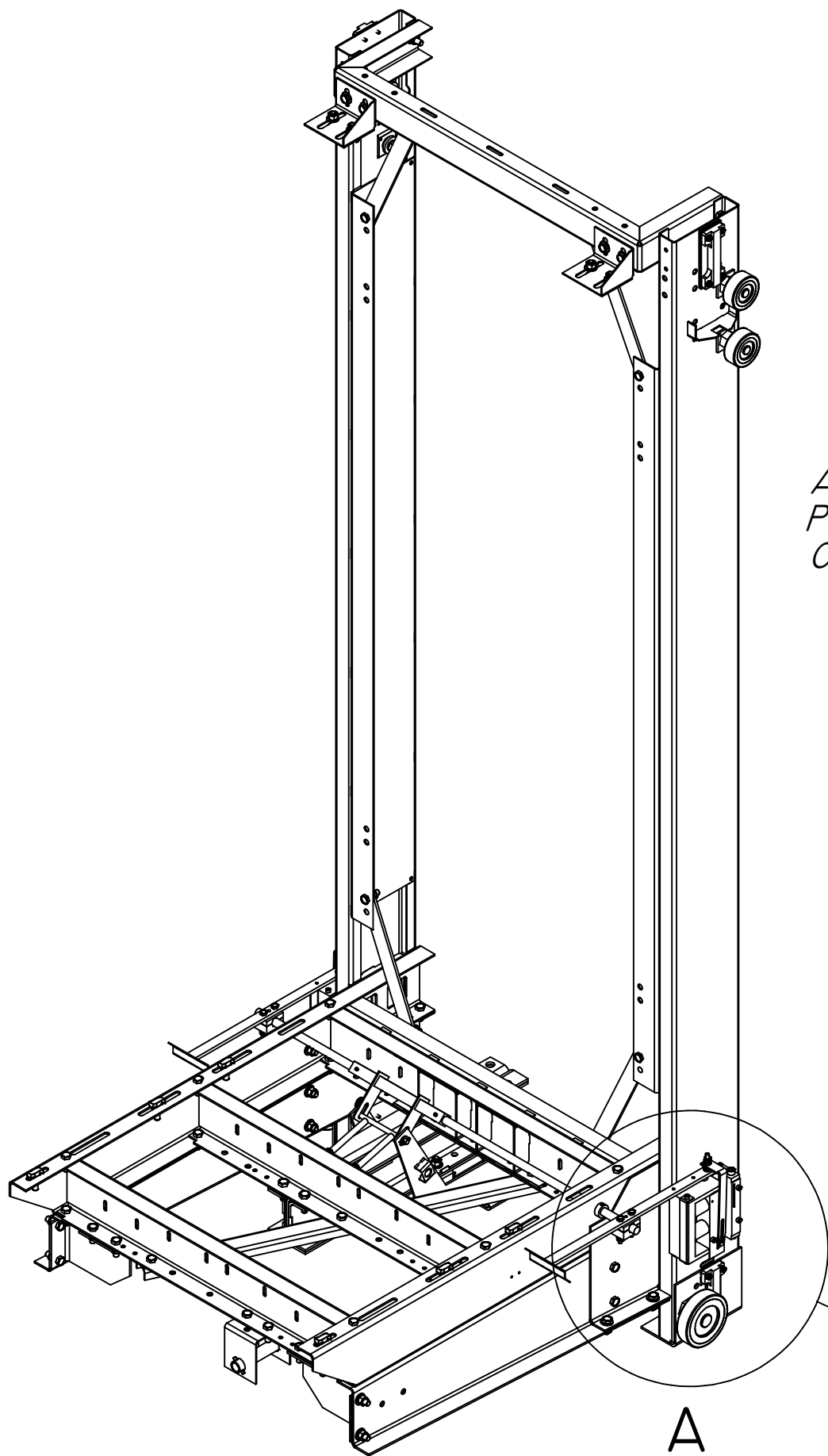
THE CAR SAFETY GEAR IS OF THE INSTANTANEOUS TYPE WHEN THE RATED SPEED OF THE LIFT DOES NOT EXCEED 0.63M/S.



CE MARK AND DATA PLATE POSITIONED ON UNDERSIDE OF SAFETY GEAR BLOCK

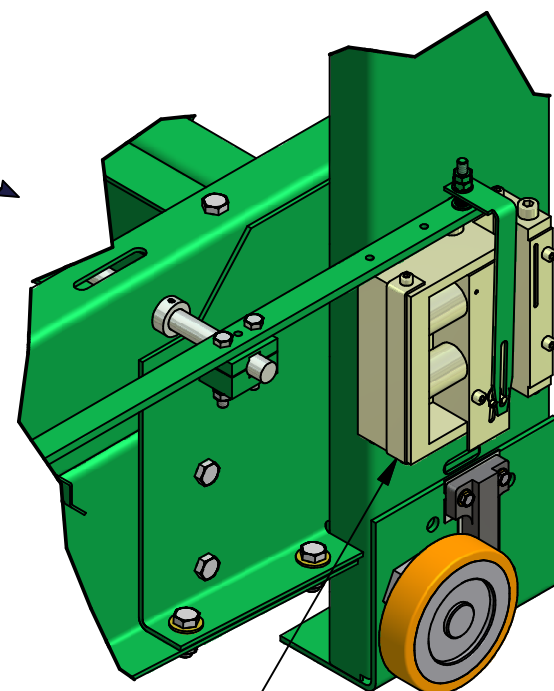
CE0086

POSITION AND DETAIL VIEW OF PROGRESSIVE SAFETY GEAR



A SAFETY GEAR IS A MECHANICAL DEVICE FOR STOPPING THE LIFT CAR AND MAINTAINING IT IN A STATIONARY POSITION ON THE GUIDES, IN THE CASE OF OVERSPEEDING IN THE DOWNWARDS DIRECTION, OR FAILURE OF THE SUSPENSION ROPES.

DETAIL A

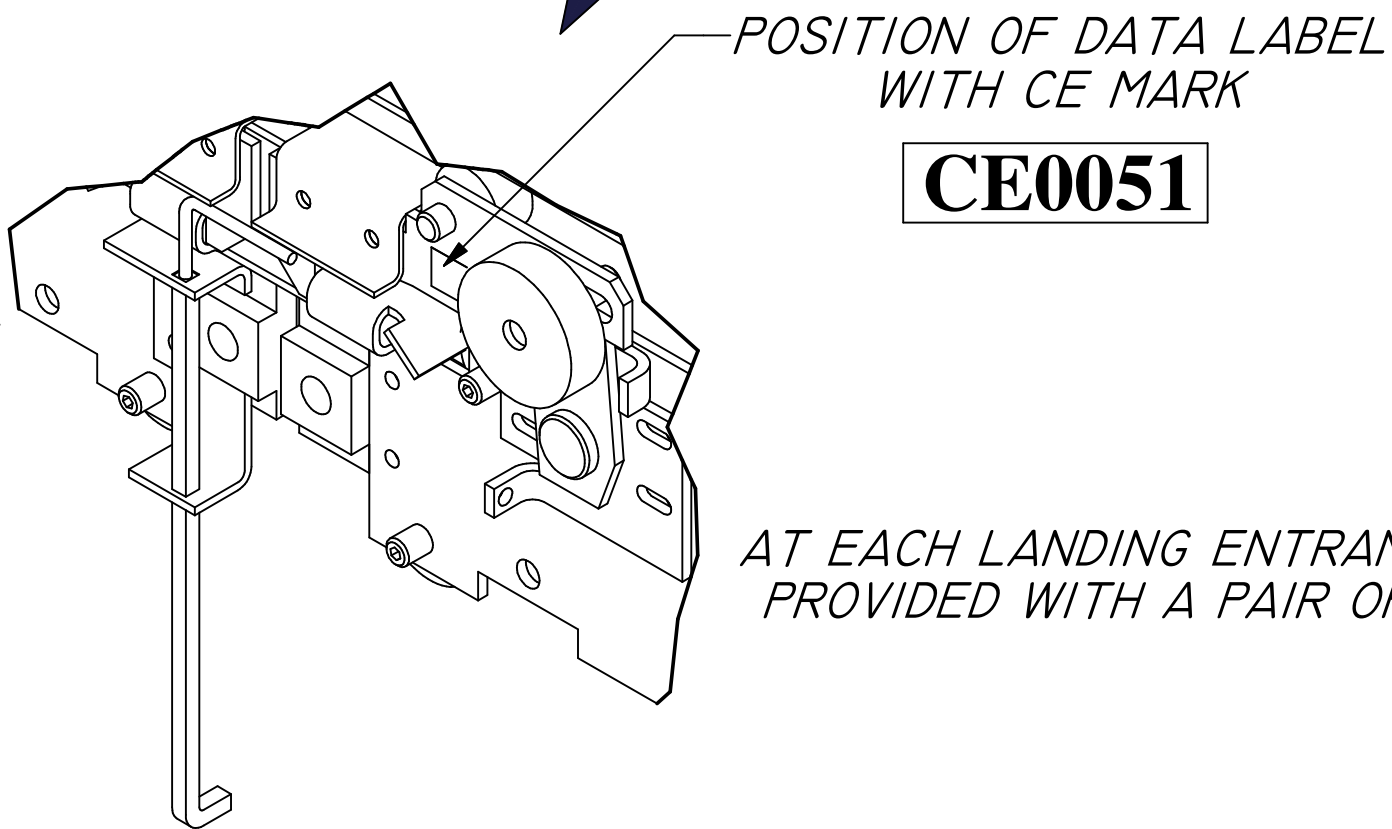
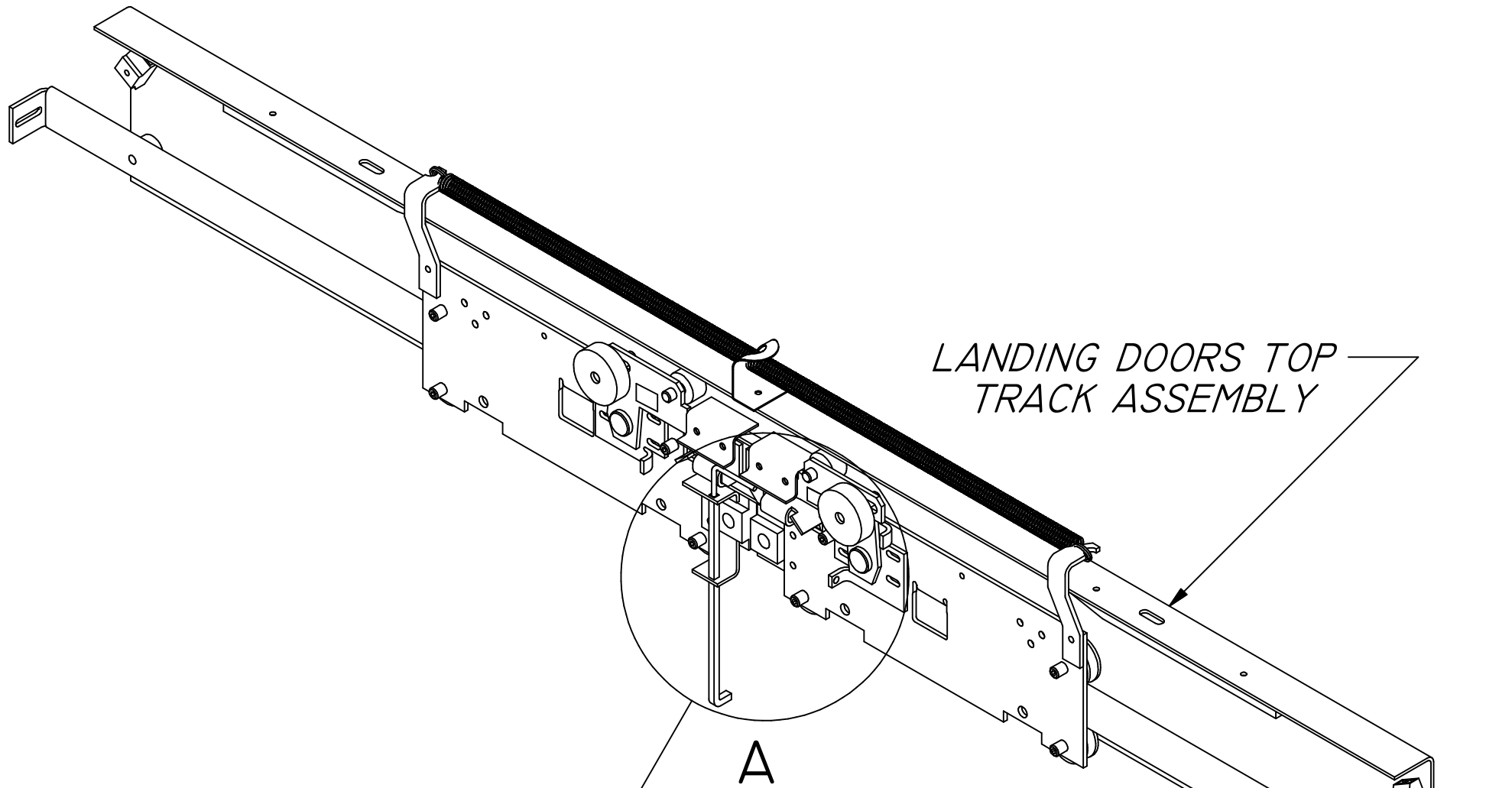


THE CAR SAFETY GEAR IS OF THE PROGRESSIVE TYPE IF THE RATED SPEED OF THE LIFT EXCEEDS 0.63M/S.

CE MARK AND DATA PLATE POSITIONED ON UNDERSIDE OF SAFETY GEAR BLOCK

CE0051

LANDING DOOR LOCKING DEVICE - 2 PANEL CENTRE OPENING



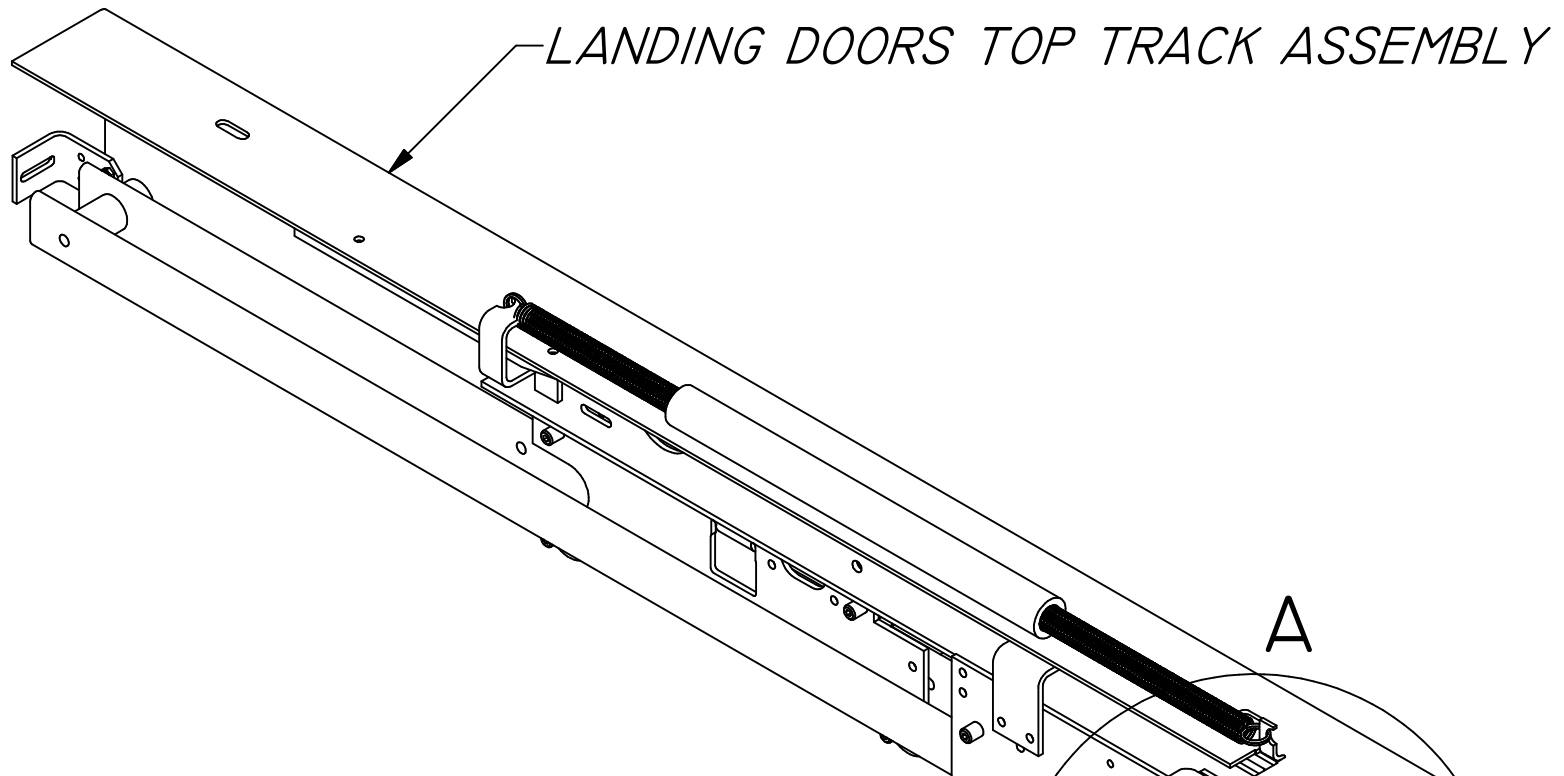
AT EACH LANDING ENTRANCE THE DOORS ARE PROVIDED WITH A PAIR OF LOCKING DEVICES.

THE LANDING DOOR LOCKING DEVICE IS VITAL TO KEEP THE LANDING DOORS SECURELY LOCKED, EXCEPT WHEN THE LIFT IS AT A LANDING FOR THE COLLECTION OR DISCHARGE OF PASSENGERS. AN ELECTRICAL SAFETY INTERLOCK ON THE LOCKING DEVICE PROVES THAT IT IS IN THE ENGAGED POSITION.

3A



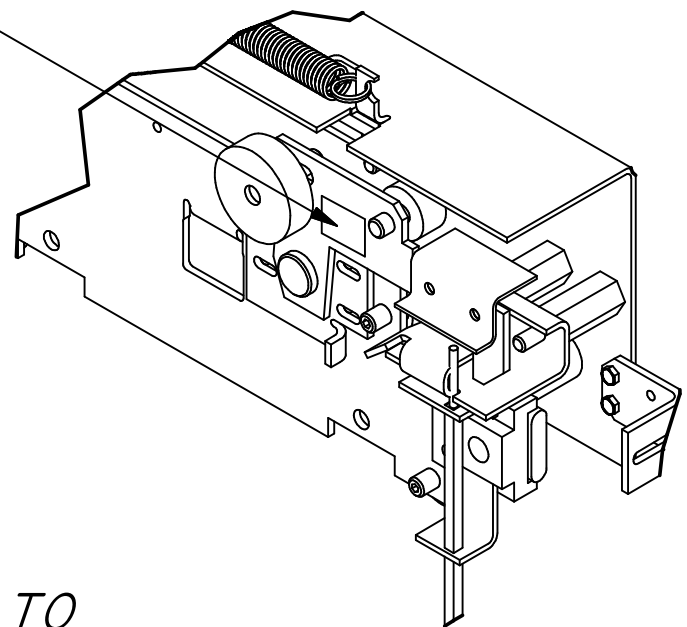
LANDING DOOR LOCKING DEVICE - 2 PANEL SIDE OPENING



AT EACH LANDING ENTRANCE THE DOORS ARE PROVIDED WITH A SINGLE LOCKING DEVICE.

POSITION OF DATA LABEL WITH CE MARK

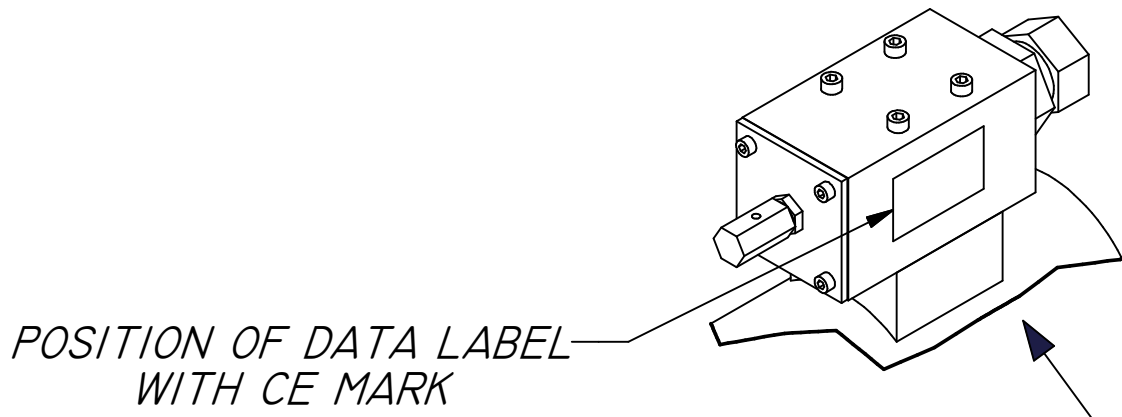
CE0051



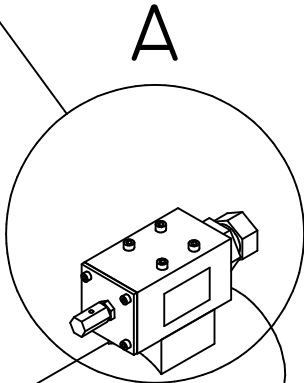
THE LANDING DOOR LOCKING DEVICE IS VITAL TO KEEP THE LANDING DOORS SECURELY LOCKED, EXCEPT WHEN THE LIFT IS AT A LANDING FOR THE COLLECTION OR DISCHARGE OF PASSENGERS. AN ELECTRICAL SAFETY INTERLOCK ON THE LOCKING DEVICE PROVES THAT IT IS IN THE ENGAGED POSITION.

ANTI FALL DEVICE - RUPTURE VALVE

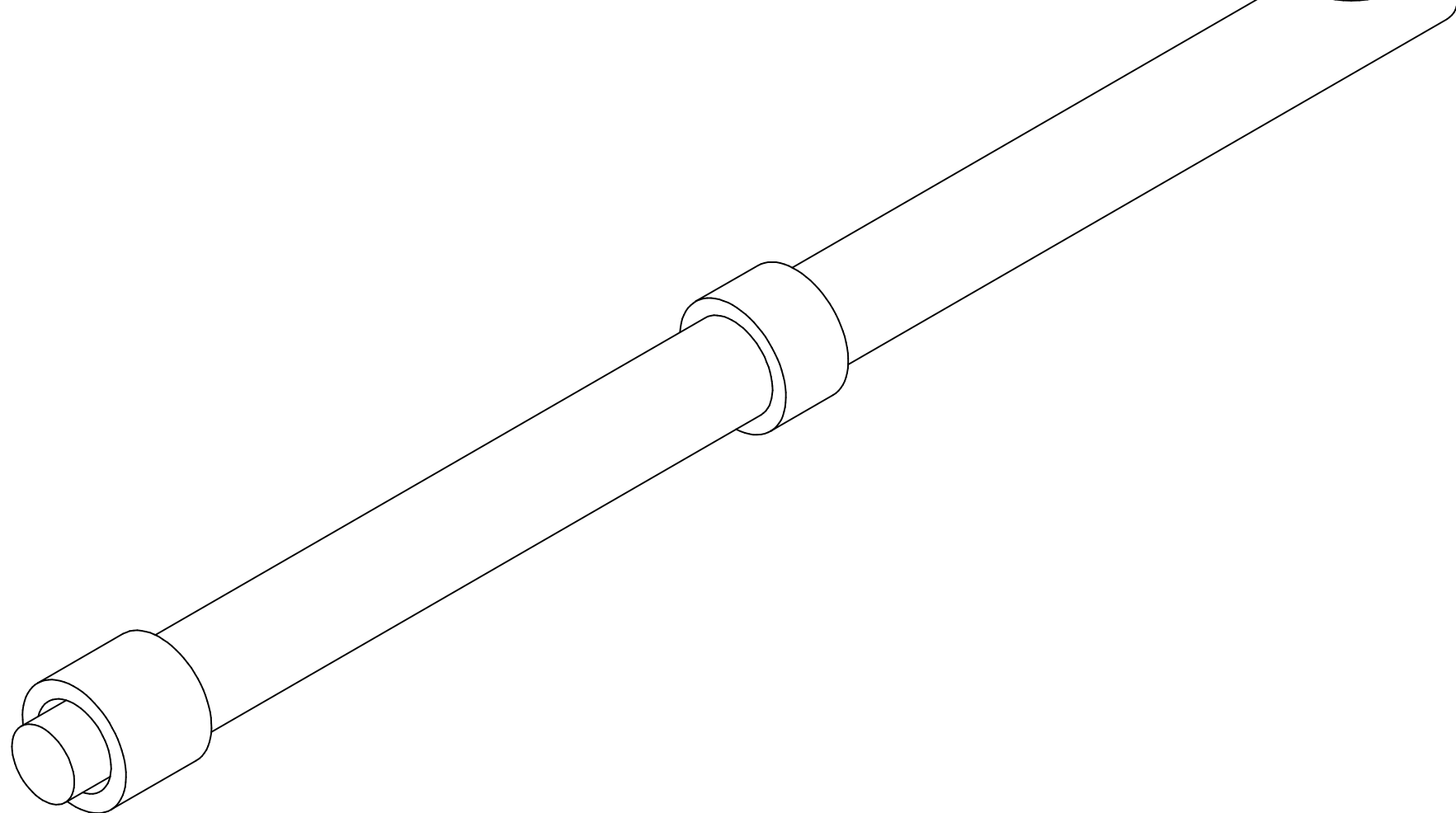
DETAIL A



CE0051

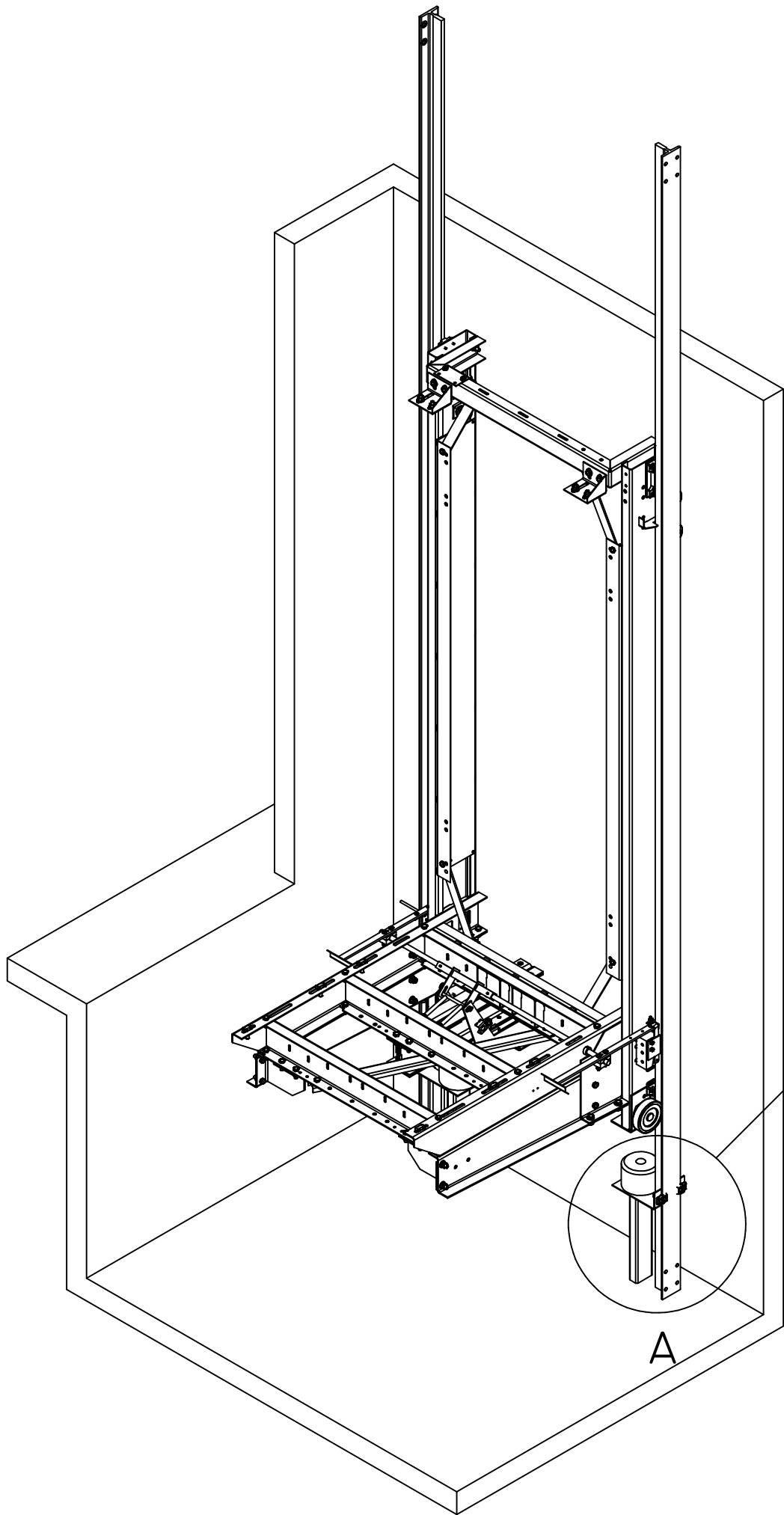


A RUPTURE VALVE IS DIRECTLY FITTED TO EACH HYDRAULIC JACK AND IS CAPABLE OF STOPPING DOWNWARD MOVEMENT OF THE LIFT CAR, AND MAINTAINING IT IN A STATIONARY POSITION.



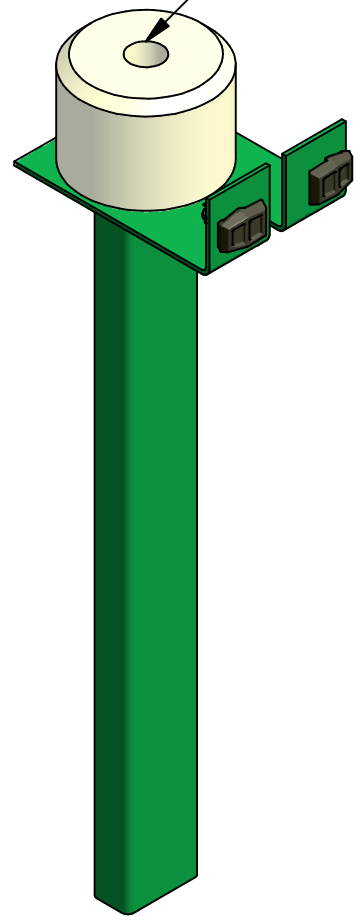
ITS PURPOSE IS TO OPERATE IN THE EVENT OF A RUPTURE IN THE HYDRAULIC PIPE/HOSE BETWEEN THE JACK AND THE HYDRAULIC POWER UNIT.

ENERGY ACCUMULATING BUFFER



*CE MARK EMBOSSED INTO
MOULDING OF BUFFER ON
TOP FACE.*

CE0032



DETAIL A

*TWO BUFFERS ARE PROVIDED IN THE LIFT PIT ON TO WHICH
THE LIFT IMPACTS SHOULD THE LIFT OVERTRAVEL AT THE
LOWEST FLOOR LEVEL.*